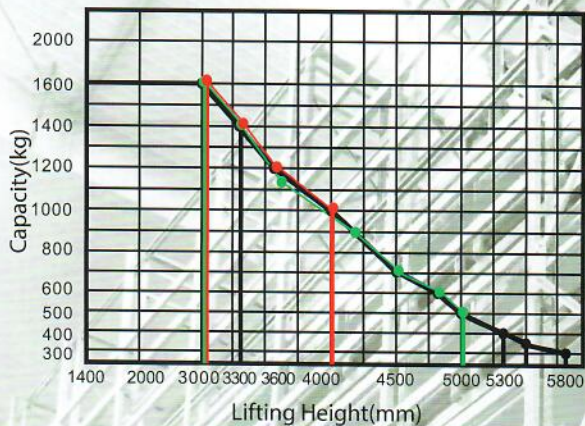


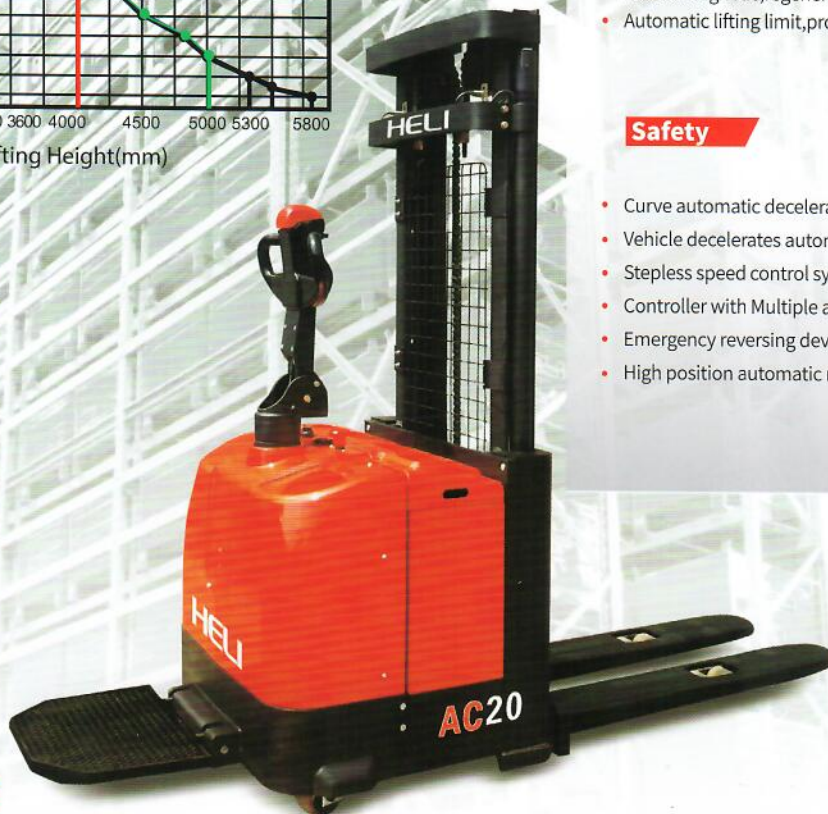
HELI

CDD16-D930/950/350 Forkover Electric Stacker

Load Curve



- CDD16-950
- CDD16-D930
- CDD16-350



Configuration and performance

- Electronic power steering system, light and low noise.
- Two-way magnetic valve, three drop speed mode.
- Drive unit floating bodies with patent design.
- AC Driving system, No carbon brush, free maintenance.
- Electromagnetic, regenerative braking system.
- Automatic lifting limit, proximity switch, long life.

Safety

- Curve automatic deceleration devices, more safe.
- Vehicle decelerates automatically at higher position.
- Stepless speed control system, safe and quiet.
- Controller with Multiple automatic protection.
- Emergency reversing device/Emergency brake switch.
- High position automatic reduction device.

AC | EPS

Down mode at 3 speeds

Steering automatic deceleration

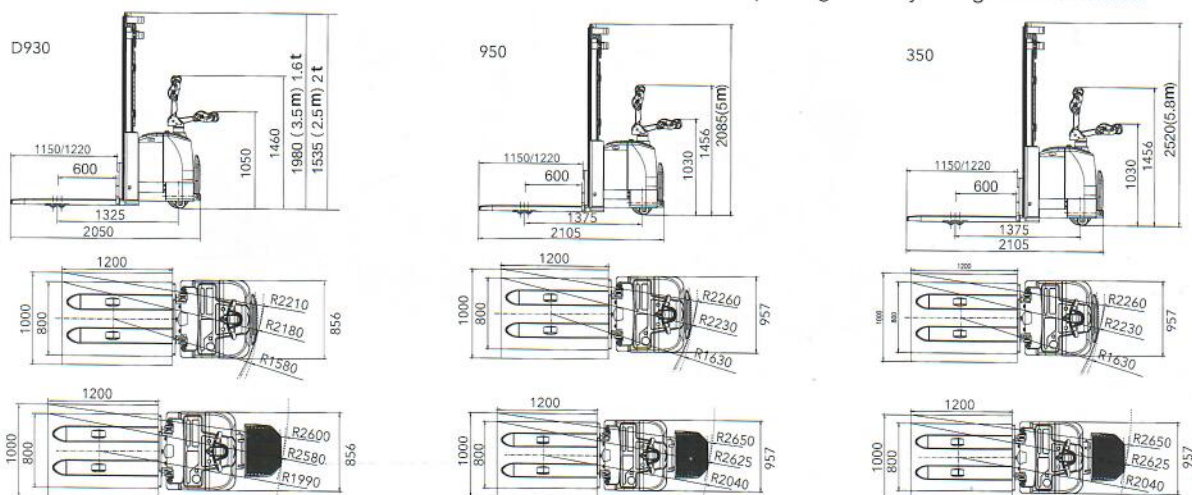
Truck automatically decelerates while at higher lifting position

| Type | Lift height (mm) | Mast type | Outside width between legs (mm) | Inside width between legs (mm) |
|------------|------------------------------------|-------------------|---------------------------------|--------------------------------|
| CDD16-D930 | 1400/2000/2500/3000/3300/3600/4000 | Standard 2-Stage | 550/600/650/685 | 180/230/280/315 |
| CDD16-950 | 3700/3900/4200/4500/4700/5000 | Full Free 3-Stage | | |
| CDD16-350 | 5300/5500/5800 | Full Free 3-Stage | | |

CDD16-D930/950/350

| Feature | | | | |
|--|------|------------------------------------|-------------------------------|-------------------|
| Model | | CDD16 | CDD16 | CDD16 |
| Configuration No. | | D930 | 950 | 350 |
| Type | | Fork Over | Fork Over | Fork Over |
| Mast type | | Standard 2-Stage | Full free 3-Stage | Full free 3-Stage |
| Load capacity | kg | 1600 | 1600 | 1600 |
| Load center | mm | 600 | 600 | 600 |
| Wheel base | mm | 1325 | 1375 | 1375 |
| Operating type | | Walkie/Stand On | | |
| Wheels | | | | |
| Wheels type | | PU | PU | PU |
| Wheel quantity Driving wheel/Balance wheel/Bearing wheel | | 1/2/4 | 1/2/4 | 1/2/4 |
| Dimension | | | | |
| Standard lift height | mm | 1400/2000/2500/3000/3300/3600/4000 | 3700/3900/4200/4500/4700/5000 | 5300/5500/5800 |
| Lowered fork height | mm | 90 | 90 | 90 |
| Fork size(length/width/thickness) | mm | 1150(1220)/185/55 | 1150(1220)/185/55 | 1150(1220)/185/55 |
| Overall length | mm | 2050/2470 | 2105/2525 | 2105/2525 |
| Overall width | mm | 856 | 957 | 957 |
| Max.extend height | mm | 1900/2500/3000/3500/3800/4100/4500 | 4200/4400/4700/5000/5200/5500 | 5800/6000/6300 |
| Mast lowered height | mm | 1185/1535/1765/1980/2135/2335/2500 | 1800/1900/1985/2085/2135/2235 | 2520/2590/2690 |
| Min.Turning radius | mm | 1580/1990 | 1595/2010 | 1595/2010 |
| Min.Aisle width for pallets 800×1200 | mm | 2180/2580 | 2230/2625 | 2230/2625 |
| Min.Aisle width for pallets 1000×1200 | mm | 2210/2600 | 2260/2650 | 2260/2650 |
| Min.ground clearance | mm | 30 | 30 | 30 |
| Performance | | | | |
| Travel speed,laden/unladen | km/h | 6/6 | 6/6 | 6/6 |
| Lift speed,laden/unladen | mm/s | 130/180 | 130/180 | 130/180 |
| Lowering speed,laden/unladen | mm/s | 100/230 | 100/160 | 100/160 |
| Gradeability,laden/unladen | % | 6/8 | 6/8 | 6/8 |
| Electrical configuration | | | | |
| Drive motor/Lift motor/Steering motor | kW | AC1.5/DC3/DC0.15 | AC1.5/DC3/DC0.15 | AC1.5/DC3/DC0.15 |
| Battery voltage | V | 24 | 24 | 24 |
| Battery capacity | Ah | 280 | 280 | 280 |
| Brake | | Electromagnetic/Regenerative | | |
| Controller | | ZAPI | | |
| Weight | | | | |
| Battery weight | kg | 235 | 235 | 235 |
| Service weight with battery | kg | 1213 | 1585 | 1649 |

* Details of specifications and equipment are based on information available at time of printing and may change without notice.



ANHUI HELI CO., LTD.

ADD: NO.668 Fangxing Street,Economical Development Zone,Hefei,P.R.China
 TEL: (86 551)63639068 (America) 63639258 (Europe) 63639358 (Asia)
 63662105 (Africa & Middle East) 63639530 (Key Accounts division)
 63662105 (Wheel loader)
 FAX: (86 551)63639966
 WEBSITE: <http://www.heliforklift.net>
 Email: heli@helichina.net

AUTHORIZED DEALER