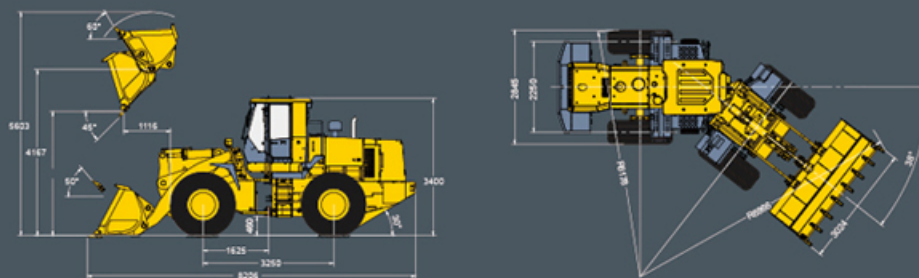




HL958

HEAVY-DUTY WHEEL LOADER



ITEM	PARAMETER	UNIT
Rated load	5000	kg
Rated bucket capacity	3	m³
Dumping height	3128	mm
Dumping distance	1116	mm
Max. breakout force	176	kn
Max. traction force	164	kn
Dimension (L * W * H)	8206×3024×3400	mm
Operating weight	16800	kg
Raise time (full load)	≤5.8	s
Hydraulic cycle time	≤9	s
Steering angle	±38	°
Min. turning radius (Outside of wheel)	6178	mm
Min. turning radius (Outside of bucket)	6866	mm
Gradeability	30	°
Wheelbase	3250	mm
Wheel tread	2250	mm
Travel speed Forward (I/II/III/IV gear)	6.8/11/20/35	km/h
Travel speed Reverse (I/II/III/IV gear)	7/12/21/36.5	km/h
Engine Model	Weichai WD10G220E21	
Rated power	162kw@2200r/min	
Tire Size	23.5-25-16PR	

Standard configuration		Optional configuration	
Weichai WD10G220E21 engine	Suspension seat	CUMMINS engine	Special attachment: wood clamp, grass clamp, pallet forks, sweeper.
HELI electric-hydraulic countershaft power shift transmission	Luxury wide-view cabin	SDEC SC11CB220G2B1 engine (China CAT engine)	ROPS/FOPS cabin
HELI driving axle	Hydraulic steering limit	ZF power shift transmission	
Pilot control for hydraulic system with Joystick	3.0 m³ bucket	Pilot Control for Hydraulic System with 2 levers	
Flow enlarging valve	3128 mm dumping height	3.5 ~ 4.5 m³ big bucket	
Air conditioner		2.5 m³ rock bucket	
Electronic device of automatic bucket leveling and limited lifting position		3495 mm high dumping height	

- For staying ahead of competitors by constant upgrading of machinery and technology, HELI have the rights to update details of specifications and design before inform end users.

ADD: No.8 Baizhang Road, Economic and Development Zone, Hefei, Anhui, China
TEL: (0086) 551-63639068

FAX: (0086) 551-63689631, 63689637
E-MAIL: helizj@helichina.net
WEBSITE: www.helichina.com

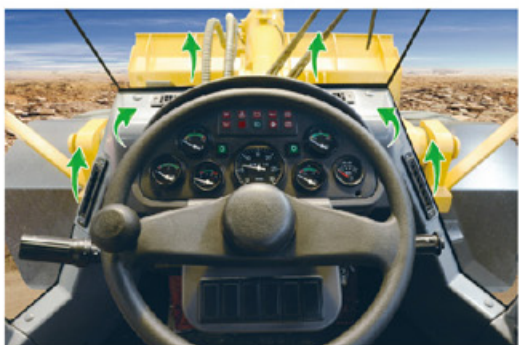
© 2013 heli copyright
Catalog No.2013-09-C HELI Print



HL 958

HEAVY-DUTY WHEEL LOADER

HELI
LIFTING THE FUTURE



ERGONOMICALLY DESIGN

- > Large-space panoramic driving cab; dust prevention, shock absorption and noise reduction; Built-in rear view mirror. Improve the comfortableness and safety.
- > Air conditioner, multi wind outlets help to care the driver comprehensively.
- > Ergonomically designed buttons on the control box, Pilot control with JOYSITCK for hydraulic system, power shift transmission, easy to operate.



PERFORMANCE

- > The design is based on the heavy load condition, especially suitable in the mine and other heavy load conditions.
- > Optimal working device, with big breakout force, high fill-ability and high working efficiency.
- > Long wheelbase, large steering angle and steering hinge point is alignment arrangement, increase work efficiency and reduce the degree of tire wear.
- > First-class quality HELI countershaft electric-hydraulic control transmission, with 4 forward/4 reverse gears and KD function, easy to operate.
- > Electronic device of automatic bucket leveling and limited lifting position, very useful in the work site with limited height.
- > Flow enlarging steering system, steering force is very small, and more comfortable when operating.

HIGH RELIABILITY

- > Box structure framework of front and rear chassises, resist torsion effectively and increase its durability.
- > Tapered roller bearings used in the hinge of front & rear chassises, ensure high reliability.
- > Optimal radiators. Always keeping cooling system working very well.
- > Cradle type rear driving axle, with wide swing angle and big support bearing.
- > In-shift split type caliper brake system, convenient and fast for the maintenance;
- > Electrophoretic primer processing technology, greatly increasing the rust prevention capacity.
- > Hydraulic system had been filtered for each machine. Greatly improves the cleanliness of hydraulic system.
- > VARTA maintenance-free batteries to provide better reliability. Waterproof and anti-corrosion connectors of electric system, accommodate to operating environment with high corrosion and dust.

CONVENIENT MAINTAINABILITY

- > Big openable engine cover and rotatable engine cover with guard fence design in the rear of the engine cover.
- > The instrument has the fuel indication function, which can real-time monitor the fuel quantity in the fuel tank.
- > The hydraulic oil tank is set in the top; The electrical system is the central control box structure and simplifies the circuit.
- > Convenient injection method of the lubricating oil; it is easy to fill with lubricating oil;
- > Centralized oil drain design; it is more convenient to change engine oil and hydraulic oil.

