

CPCD 60/70 /80/100 CU5K2-X



HELI



6-10 t

K2 Series Container Operation Forklift In The Box



ANHUI HELI CO., LTD.

Add / No.668, FangXing Road, Hefei, China

Fax / +86-551-63639966

Tel / +86-551-63639068(America); 63639258(Europe); 63639358(Asia);
63662105(Africa & Middle East);



LinkedIn



YouTube



Facebook

TRAVEL STEADILY TO REACH THE FUTURE
LIFT HEAVY LOADS WITH EASE



ENVIRONMENTAL AND ENERGY SAVING 01-02



SAFE AND RELIABLE

03-04



SMART AND COMFORTABLE

05-06



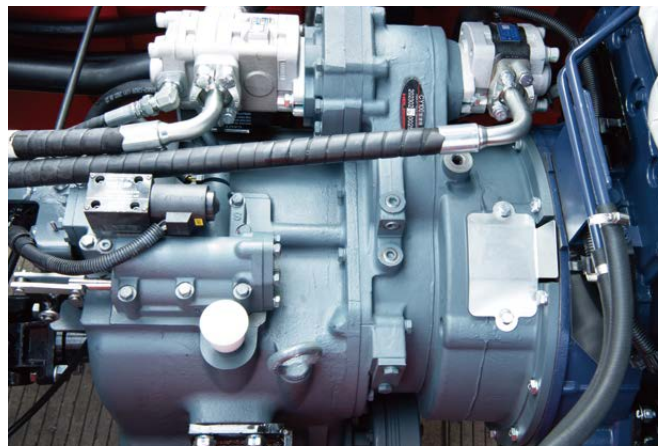
CONVENIENT MAINTENANCE

07-08

ENVIRONMENTAL AND ENERGY SAVING



Standard LED lamps, energy saving, more brighter,
long service life



Load sensing steering and dual pump confluence technology,
energy consumption reduce by **10 %**



SAFE AND RELIABLE



The independently developed gearbox has experienced nearly 30 years of technical innovation and market validation



TCast steel driving axle housing ensure reliable structure; Standard drum brake, wet brake as optional.



Rain test



Impact test of overhead guard



Reinforced beams for increased stiffness and strength



Steering cylinder protection sleeve is standard, and the cast steering hub is more reliable under severe working conditions.

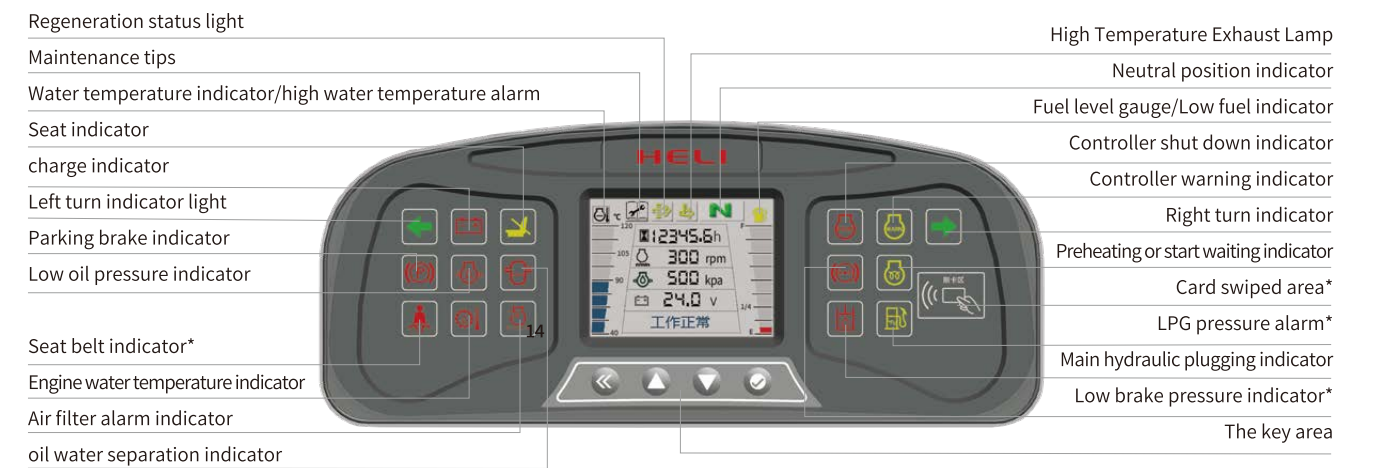


Optional configurations for safety: Three sides lights, Rear working lamps, Blue light, Extinguisher, Warning light, Reversing radar and camera.

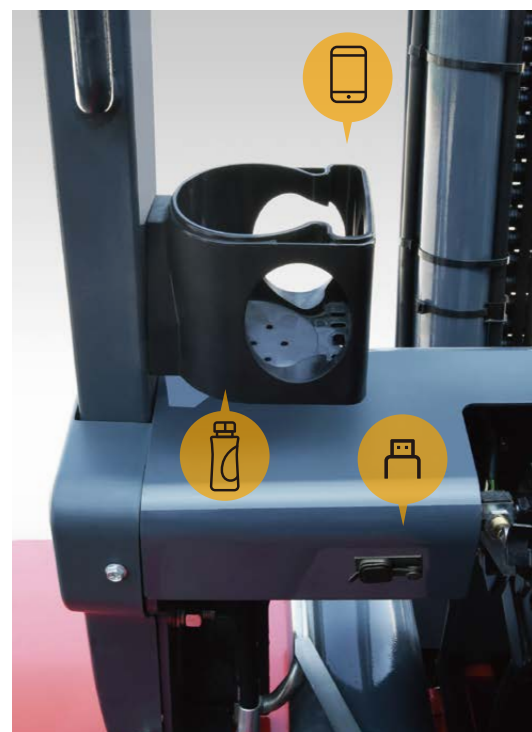
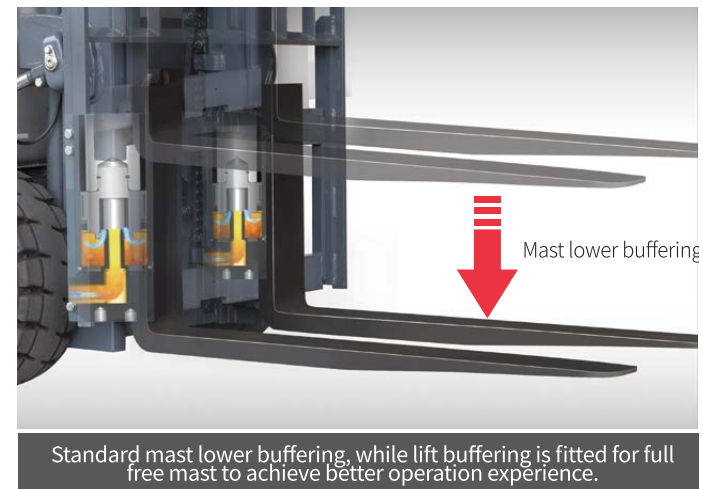
SMART AND COMFORTABLE

Hidden gantry piping
wide view gantry

RELIABLE SPECIAL DESIGNED INSTRUMENT



Reliable special meter displays the whole truck's working condition, fault detect and other important information completely which makes the operator master the whole truck condition directly and conveniently. *: Some model options



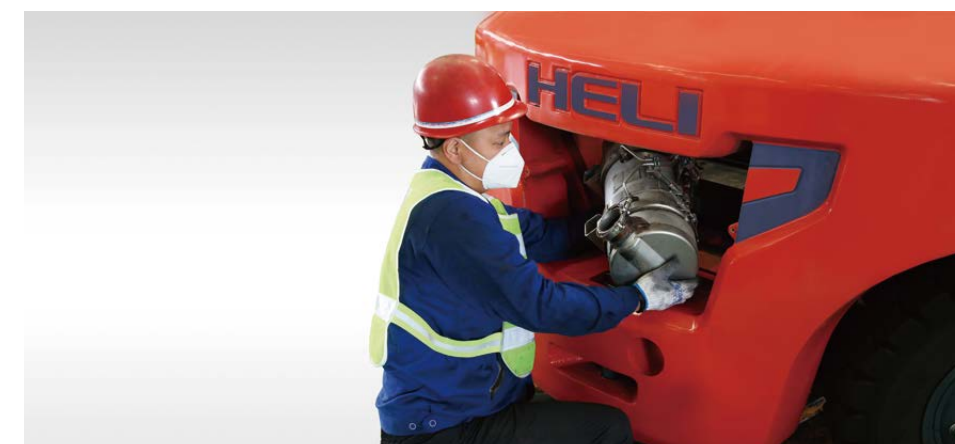
CONVENIENT MAINTENANCE



Integrated electrical cabinet, dustproof and waterproof, easy to check



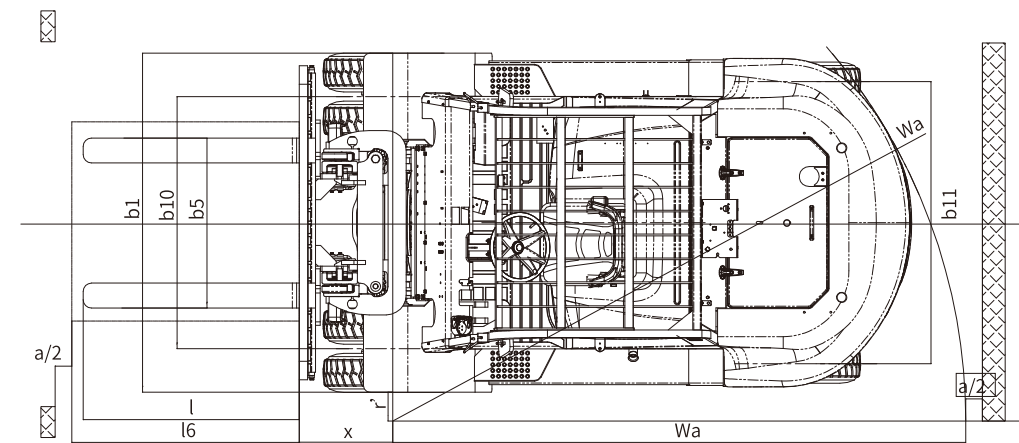
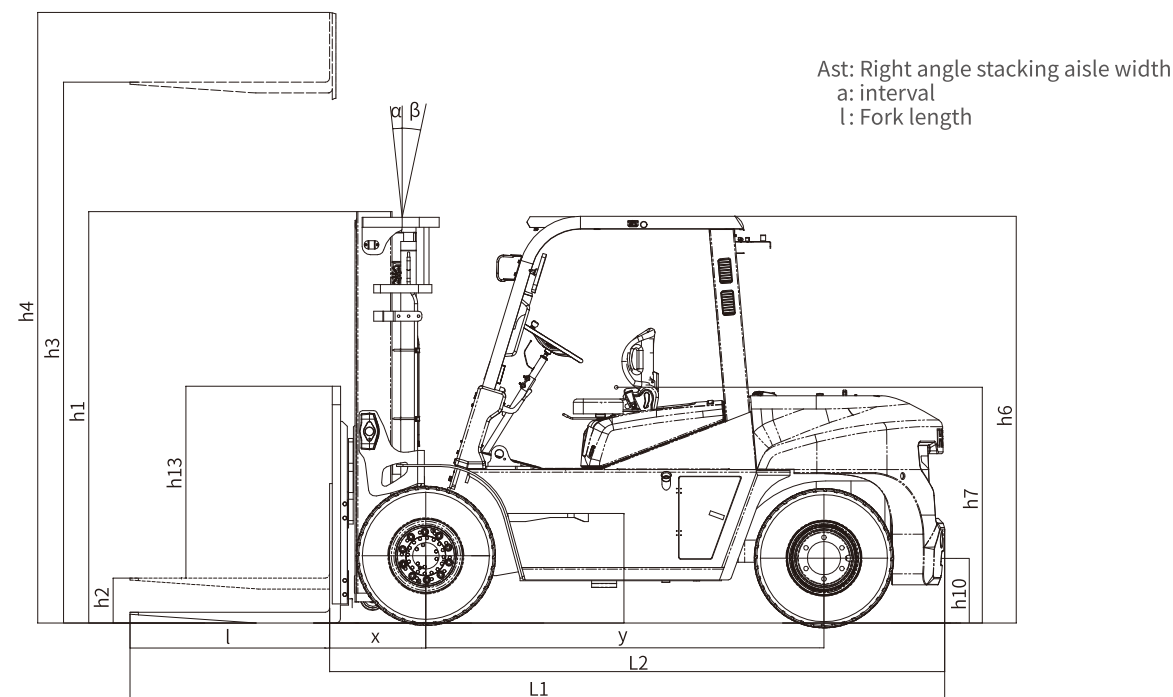
Radiator cover with supporting rod can open to 80 degrees. It is convenient to check



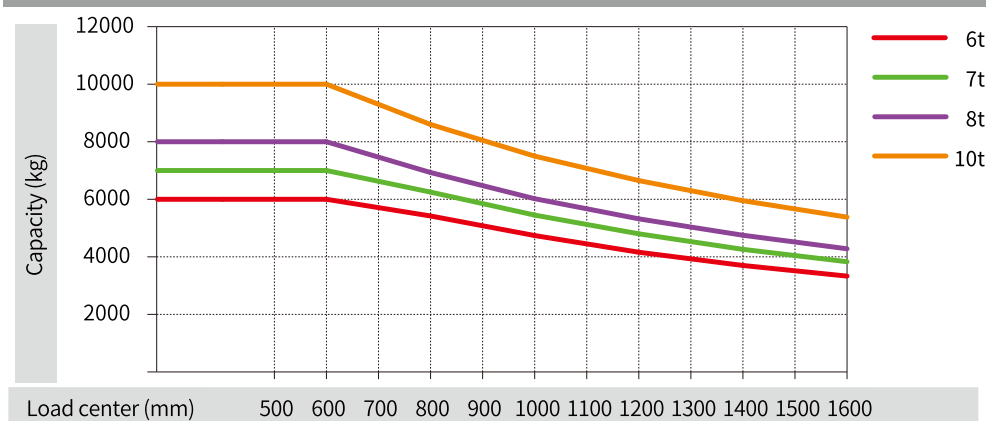
Easy to remove from exhaust aftertreatment Facilitates regular maintenance

MANUFACTURER AND TECHNICAL DATA

1.0	Manufacturer		HELI					
2.0	Model		CPCD60		CPCD70		CPCD80	CPCD100
3.0	Configuration number		QC1K2-X					
Characteristics								
4.01	Rated capacity		kg	6000	7000	8000	10000	
4.02	Load center distance		mm	600				
4.03	Power mode			Diesel				
4.04	Driving mode			Seat-type				
4.05	Front overhang	x	mm	580	585	590	700	
4.06	Wheelbase	y	mm	2400			2400	2850
4.07	Total weight		kg	8770	9370	10200	12300	
Dimension parameter								
5.01	Mast tilt angle (forward/backward)	α/β	°	6/12				10/12
5.02	Height (mast lowered)	h1	mm	2210				2190
5.03	Free lifting height	h2	mm	840				960
5.04	Lifting height (standard)	h3	mm	2500				2100
5.05	Max. height,extended (with backrest)	h4	mm	3900				3345
5.06	Height of overhead guard	h6	mm	2200				2230
5.07	Seat height relating to SIP (to ground)	h7	mm	1300				1330
5.08	Towing coupling height	h10	mm	390				
5.09	Ground clearance (between mast)	h13	mm	1350	1345	1340	/	
5.10	Backrest height (Calculated from the surface of the fork)	m1	mm	160				200
5.11	Overall length (with fork)	L1	mm	4850	4890	5020	5440	
5.12	Overall length (without fork)	L2	mm	3630	3670	3800	4220	
5.13	Overall width	b1	mm	2044				2020
5.14	Fork adjustable range (the external of the fork)(Max./Min.)	b5	mm	300-1845				470-1730
5.15	Fork size:thickness x width x length	b10	mm	1520				
5.16	Tread, front	b11	mm	1700				
5.17	Tread, rear	s/e/l	mm	60x150x1220	65x150x1220	70x150x1220	80x175x1220	
5.18	Right angle stacking aisle width for pallet 1000 x1200mm crossways	Ast	mm	5280	5350	5470	6060	
5.19	Min. outside turning radius	Wa	mm	3300	3350	3400	3940	
Specifications								
6.01	Max. Travelling speed(laden/unladen)		km/h	28/30	28/30	28/30	28/30	
6.02	Lifting speed(laden/unladen)		mm/s	500/530	500/530	450/480	330/350	
6.03	Lowering speed(laden/unladen)		mm/s	WITHOUT LOAD≥300 WITH FULL LOAD≤600				
6.04	Max. Draw bar(laden)		kN	70	70	70	70	
6.05	Max. Gradeability (laden/unladen)		%	35/20	32/20	30/20	23/20	
Tyres								
7.01	Wheels,number front/rear (x=driven wheels)			4X/2				
7.02	Tyre type front/rear			Pneumatic-tyre				
7.03	Tyre size,front			8.25-15-14PR				8.25-20-14PR
7.04	Tyre size,rear			8.25-15-14PR				9.00-16-14PR
Engine specifications								
8.01	Engine manufacturer /mode			QUANCHAI S45-130C41(CHINA STAGE IV)				
8.02	Rated power/Speed		Kw/rpm	95.6/2200				
8.03	Max.torque/Speed		Nm/rpm	540/1400-1650				
8.04	Cylinder number-bore ×stroke		/L	4-105x124/4.3				
8.05	Fuel tank capacity		L	140				
Other								
9.01	Transmission type			Hydraulic transmission - electro-hydraulic directional change				
9.02	Transmission number of speed (fwd/bwd)			2/2				
9.03	Service brake			Powered brake-pedal type				
9.04	Parking brake			Mechanical-hand brake lever type				
9.05	Operating pressure for attachments		mpa	21	21	23	23	
9.06	Battery voltage/Capacity		V/Ah	2x12/80				



Load curve



Note: The vertical axis stands for load capacity and the horizontal axis stands for load center which is calculated from the front surface of the forks to the gravity of the standard load.the standard load means a cubic with 1200mm edge length.When mast is tilted forward,using non-standard forks or loading large goods, the load capacity will be reduced.The load capacity of standard mast at different load center can be known from this load chart.

6-8t WIDE VIEW MAST										
Mast type	Max.lifting height (mm)	Load capacity (lode center 600mm)(kg)			Height (mast lowered) (mm)	Free lift height (with backrest) (mm)	Service weight (kg)			Mast tilt angle α/β (°)
		CPCD60	CPCD70	CPCD80	CPCD60/70/80	CPCD60/70/80	CPCD60	CPCD70	CPCD80	
M220	2200	6000	7000	8000	2080	160/165/170	8870	9470	10300	6/12

Note: With internal sideshift, the lifting weight is reduced by 200kg. With external sideshifter, the lifting weight reduced by 300kg.

6-8t WIDE VIEW FULL FREE 2-STAGE MAST										
Mast type	Max.lifting height (mm)	Load capacity (lode center 600mm)(kg)			Height (mast lowered) (mm)	Free lift height (with backrest) (mm)	Service weight (kg)			Mast tilt angle α/β (°)
		CPCD60	CPCD70	CPCD80	CPCD60/70/80	CPCD60/70/80	CPCD60	CPCD70	CPCD80	
ZM220	2200	6000	7000	8000	2060	690	8744	9344	10174	6/12
ZM250	2500	6000	7000	8000	2210	840	8770	9370	10200	6/12

Note: 1) The free lift without backrest 270mm increase;
2) With internal sideshift, the lifting weight is reduced by 200kg.

6-8t WIDE VIEW FULL FREE 3-STAGE MAST										
Mast type	Max.lifting height (mm)	Load capacity (lode center 600mm)(kg)			Height (mast lowered) (mm)	Free lift height (with backrest) (mm)	Service weight (kg)			Mast tilt angle α/β (°)
		CPCD60	CPCD70	CPCD80	CPCD60/70	CPCD60/70	CPCD60	CPCD70	CPCD80	
ZSM320	3200	5600	6200	-	2210	840	9450	10050	10880	6/6
ZSM360	3600	5600	6200	-	2210	840	9470	10070	10900	6/6

Note: The free lift without backrest 270mm increase.

10t WIDE VIEW MAST						
Mast type	Max.lifting height (mm)	Load capacity (lode center 600mm)(kg)	Height (mast lowered)(mm)	Free lift height (with backrest) (mm)	Service weight (kg)	Mast tilt angle α/β (°)
		CPCD100	CPCD100	CPCD100	CPCD100	
M200	2000	10000	2190	200	12500	10/12

Note: With internal sideshift, the lifting weight is reduced by 200kg.

10t WIDE VIEW FULL FREE 2-STAGE MAST						
Mast type	Max.lifting height (mm)	Load capacity (lode center 600mm)(kg)	Height (mast lowered)(mm)	Free lift height (with backrest) (mm)	Service weight (kg)	Mast tilt angle α/β (°)
		CPCD100	CPCD100	CPCD100	CPCD100	
ZM210	2100	10000	2190	960	12300	10/12

Note: 1) The free lift without backrest 10t;
2) With internal sideshift, the lifting weight is reduced by 200kg.

Engine specifications						
Engine manufacturer /model	Vehicle model	Rated power/speed	Maximum torque /speed	Number of cylinders - diameter * stroke/ displacement	Emission standard	Self weight (including oil and water)
Cummins QSF3.8 diesel engine	CPCD60-70-80-100-CU5K2-X	86/2200	470/1400	4-102*115/3.8	China III, Euro 3A	8770/9370/10200/1230

Note: The weight of the whole truck in the above table is the weight of the engine of Quanchai S45; for all the above gantries, when the mounting method of the cargo racks or attachments is tandem-axle type, it is standardized to be equipped with racks without stops, and when it is hook-type, it is standardized to be equipped with racks with stops.

CONFIGURATION		
Configuration		进箱车
Packaging method	HELI Packing	●
	Meet the latest emission dynamics (CHINA STAGE IV)	●
Economic and energy saving	Load sense steering and double pump confluence	●
	Hydraulic power braking	●
Intelligent security	Tilting cylinder with self-locking valve	●
	Reversing buzzer	●
	Reversing voice horn	○
	Reverse radar and camera	○
	Assembly overspeed alarm (adjustable speed limit value)	○
	OPS (only for driving)	●
	OPS (Driving and lifting)	○
	Electric power switch	○
	Engine oil pressure alarm	●
	Oil water separator indicator	●
	Charging indicator	●
	Water temperature gauge	●
	Neutral start switch	●
	Fire extinguisher	○
	Spark arrester	○
	Fuel cap with lock	●
	Engine hood locking device	○
	Drum brake drive axle	●
Reliability	Wet-type brake drive axle (Mandatory cooling)	○
	Hydraulic oil radiator	○
	9 inches double filter element air filter (with pressure alarm)	●
	Self discharging ash filter	○
	Dry-type double air filter	○
	intelligent gear shift	●
Comfortable and convenient	Steering wheel with knob (HELI packing)	●
	Steering wheel without knob (HELI packing)	○
	Full hydraulic power steering	●
	Mast rear cylinder with lower buffering and front cylinder with lifting buffering	●
	Speed limiting valve for lifting oil circuit	●
	Man-machine interactive liquid crystal instrument	●
	Fan	○
	USB interface	●
	Rear view mirrors at both sides	●
	Get on/off handle	●

CONFIGURATION		
Configuration		进箱车
Cab/ wind shield	Front windshield (with wiper)	○
	Rear windshield (without wiper)	○
	Glass ceiling	○
	Panel mounted cab	○
	Single cooling air conditioner	○
	Cold and warm air conditioner	○
	heater	○
Lifting system	Basic wide view mast	○
	Two stages full free wide view mast	●
	Three stages full free wide view mast	○
	Hook type of fork carriage (6/7/8t)	●
	Hydraulic fork positioner(10t)	●
	Backrest (6/7/8t)	●
Lights	Non standard fork and attachment	○
	全车LED灯	●
	LED rear working lights	○
	Rear side of blue light	○
	Three sides of blue strip light	○
	Three sides of red strip light	○
	LED flashing warning light (assembly type)	○
	LED rotary warning light (assembly type)	○
	LED rotary buzzer light (assembly type)	○
Tyre	Pneumatic tyre	●
	Solid tyre	○
Others	Metric thread	●
	Middle exhaust	●
	High exhaust	○
	counterweight with protective net	○
	Counterweight and mast sling	○
	Steering cylinder sleeve	●
	Tilting cylinder sleeve	○
	Keyed to a non-universal key	●
	Universal keys (2 pieces)	○
	Universal keys (4 pieces)	○
	Traction device	●
	Driver 's tool kits	●
	Customized color	○

Note: “●” Standard ; “○” Optional